

(FOR TOP & BOTTOM REINFORCEMENT)

Technical drawing of a floor plate (FS) with dimensions and callouts:

- Top left corner: EL. 100'-0" T/WALL
- Top center: 1'-0"
- Top right corner: -X-X-X-X-
- Left side: EL. 98'-0" T/F.T.G.
- Bottom left corner: EL. 96'-0" B/F.T.G.
- Bottom center: 2'-0"
- Right side callouts:
  - #4 @ 12" Horz.
  - #5 5A16 @ 12" D/V
  - #5 @ 12" T&B Cont.
- Bottom center: FS= 2'0" X 2'5"

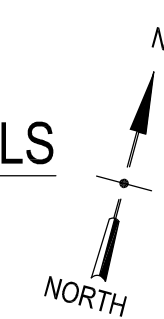
SECTION 2

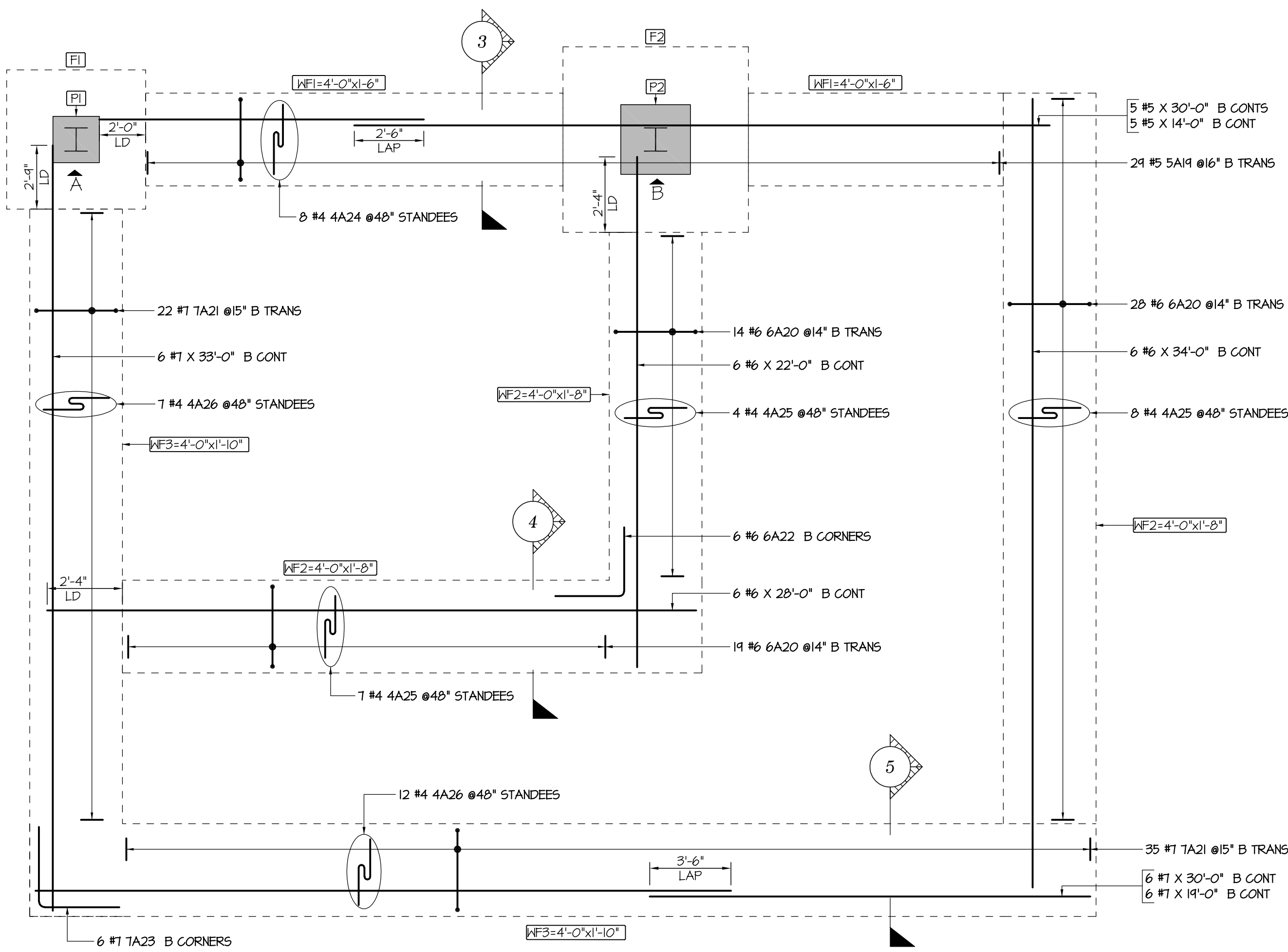
SCALE: 1/2" = 1'-0"

REF: 2/S400

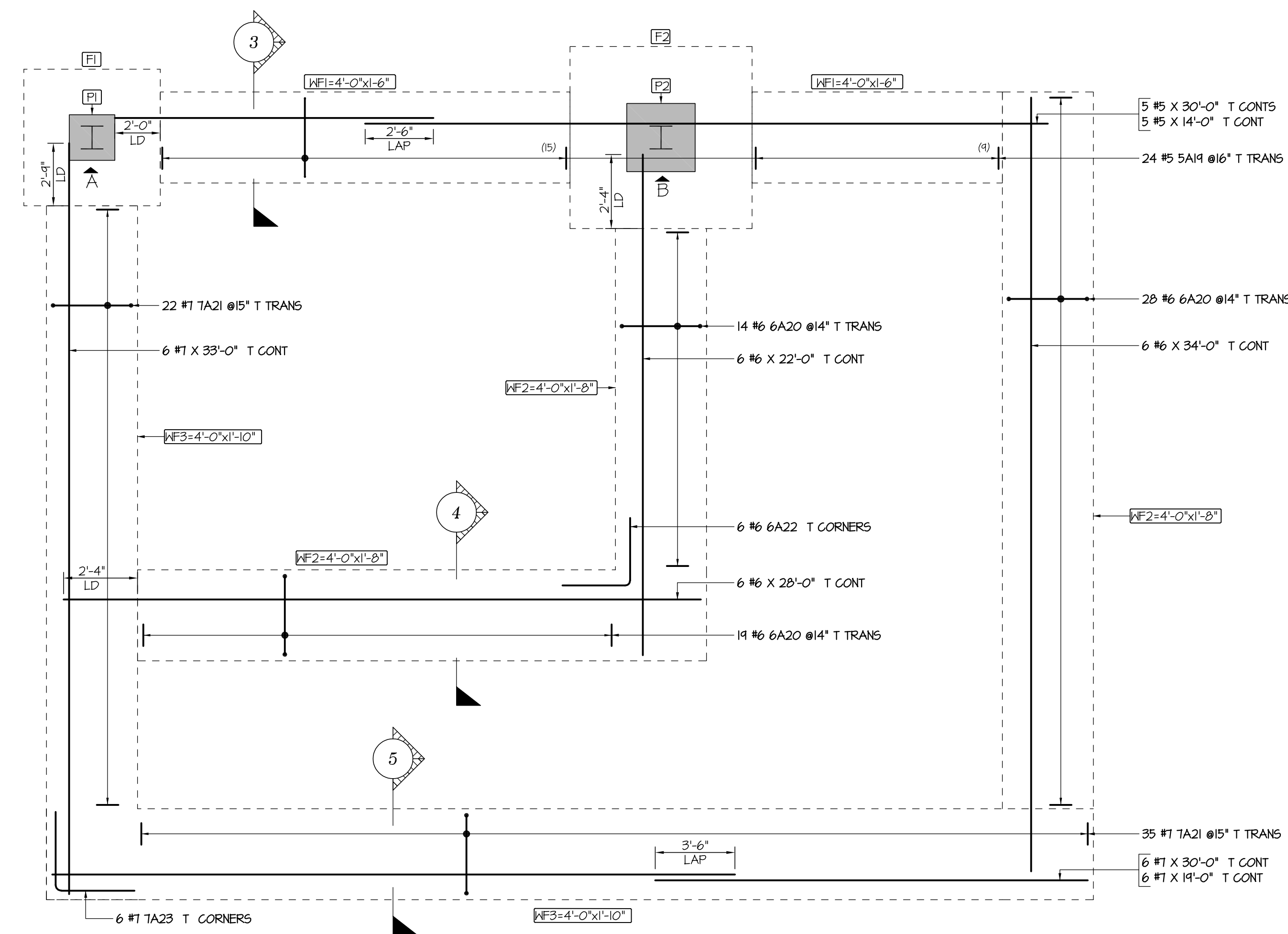
**A** **ELEVATION**  
Scale - 1/4"=1'-0"  
REF: 9/S400

SCALE. 1/8" = 1'-0"



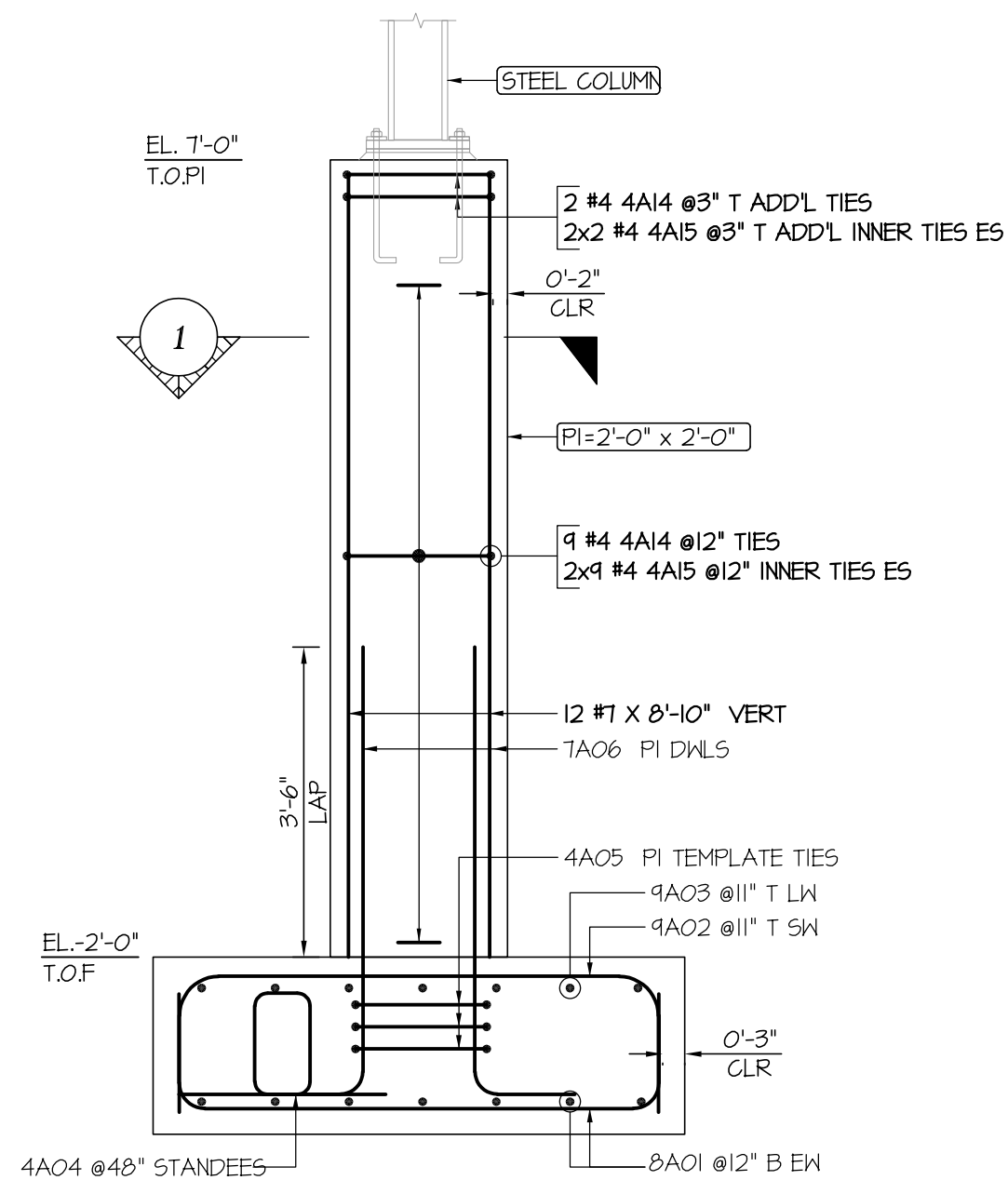


PLAN-WALL FOOTING BOTTOM REINFORCEMENT DETAILS  
SCALE: 1/4" = 1'-0"

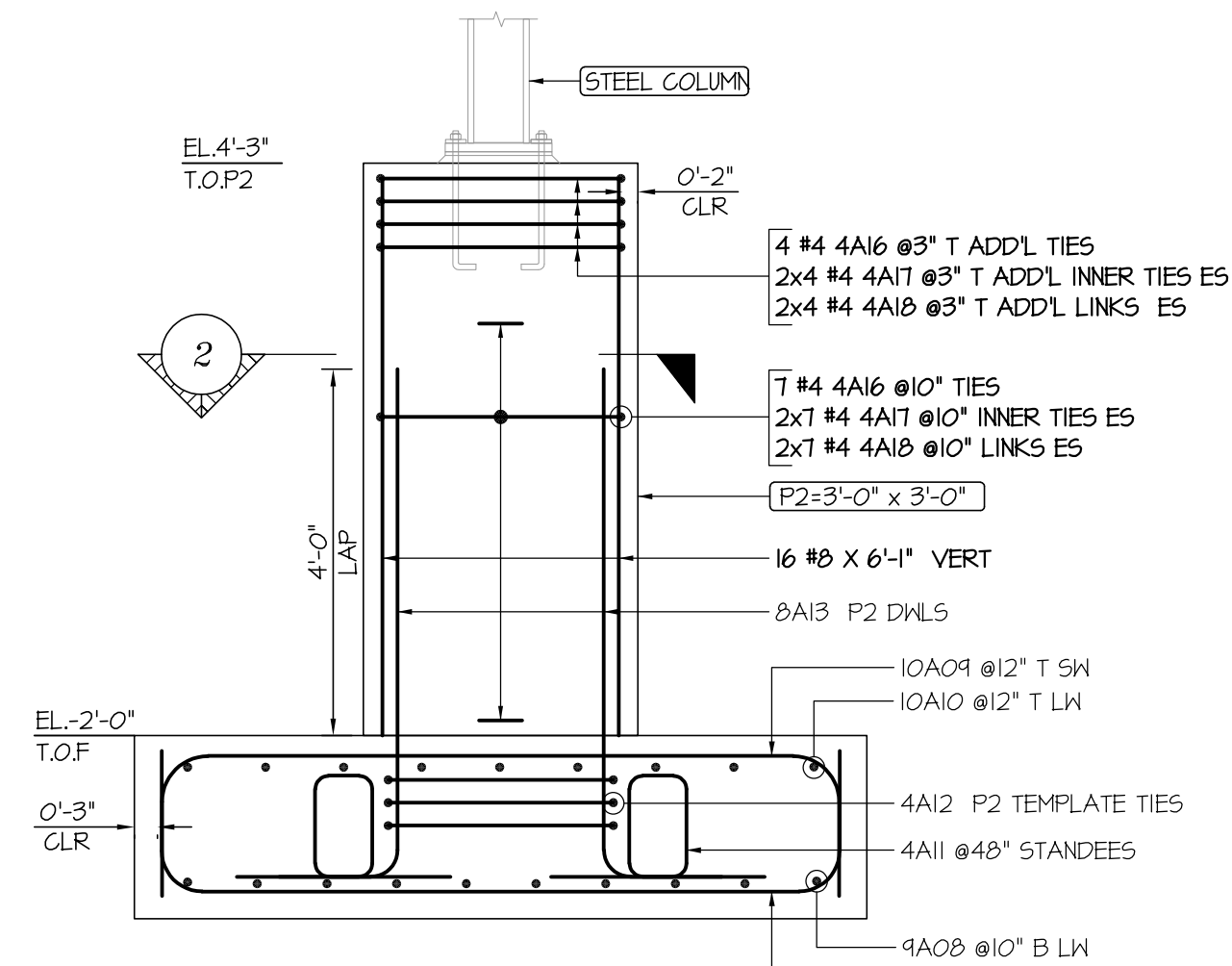


PLAN-WALL FOOTING TOP REINFORCEMENT DETAILS  
SCALE: 1/4" = 1'-0"

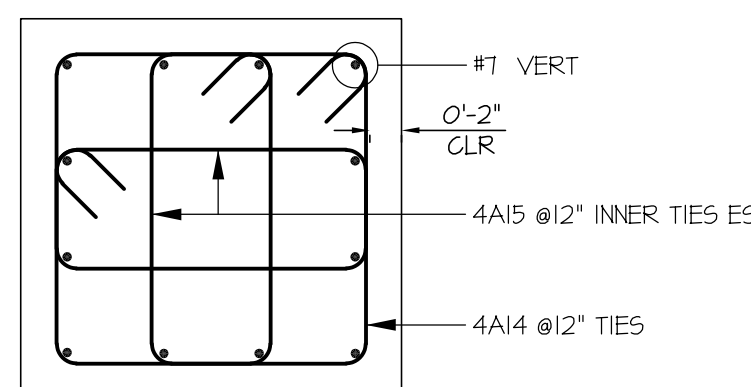
SPREAD FOOTING SCHEDULE					
FOOTING MARK	FOOTING SIZE LENGTH X WIDTH	FOOTING DEPTH	FOOTING QTY.	REINFORCEMENT	REMARKS
F1	6'-0" X 6'-0"	2'-0"	1	2x1 #8 8A01 @12" B EH 1 #1 9A02 @1" T SH 1 #1 9A03 @1" T LH 4 #4 4A04 @48" STANDEES 3 #4 4A05 P1 TEMPLATE TIES 12 #7 1A06 P2 DWLS	REFER ELEVATION-A
F2	8'-0" X 8'-0"	2'-0"	1	10 #1 9A01 @10" B SH 10 #1 9A02 @10" B LH 4 #10 10A01 @12" T SH 4 #10 10A02 @12" T LH 4 #4 4A11 @48" STANDEES 3 #4 4A12 P2 TEMPLATE TIES 16 #8 8A13 P2 DWLS	REFER ELEVATION-B



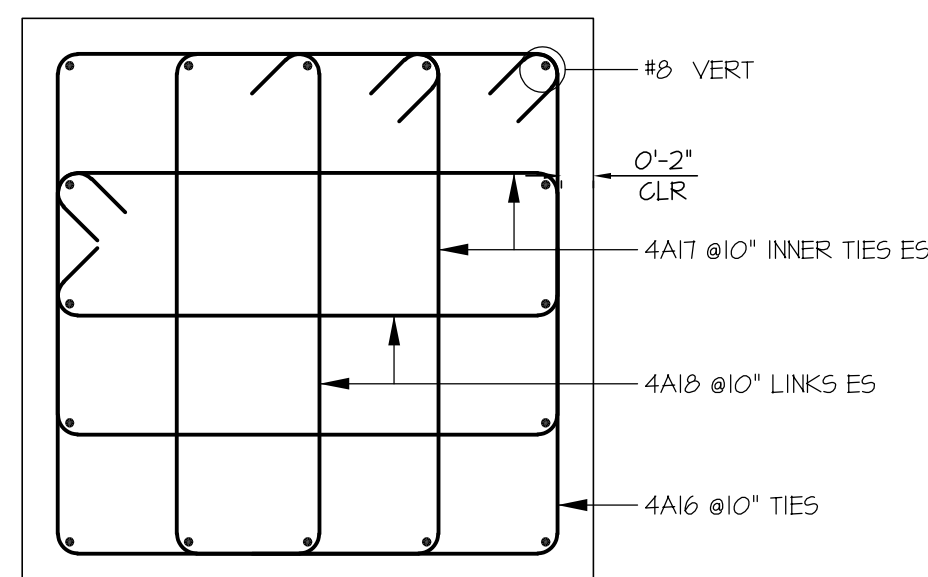
ELEVATION-A  
SCALE: 1/2" = 1'-0"



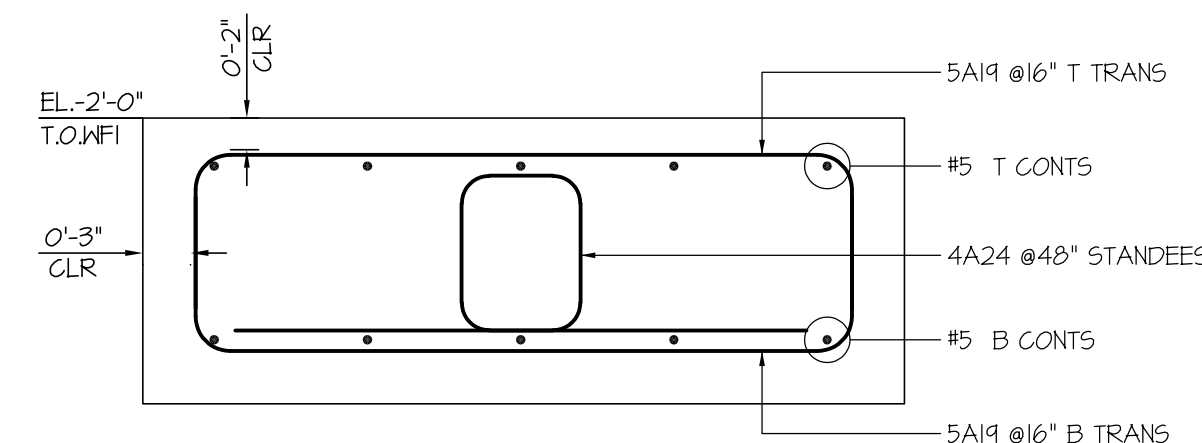
ELEVATION-B  
SCALE: 1/2" = 1'-0"



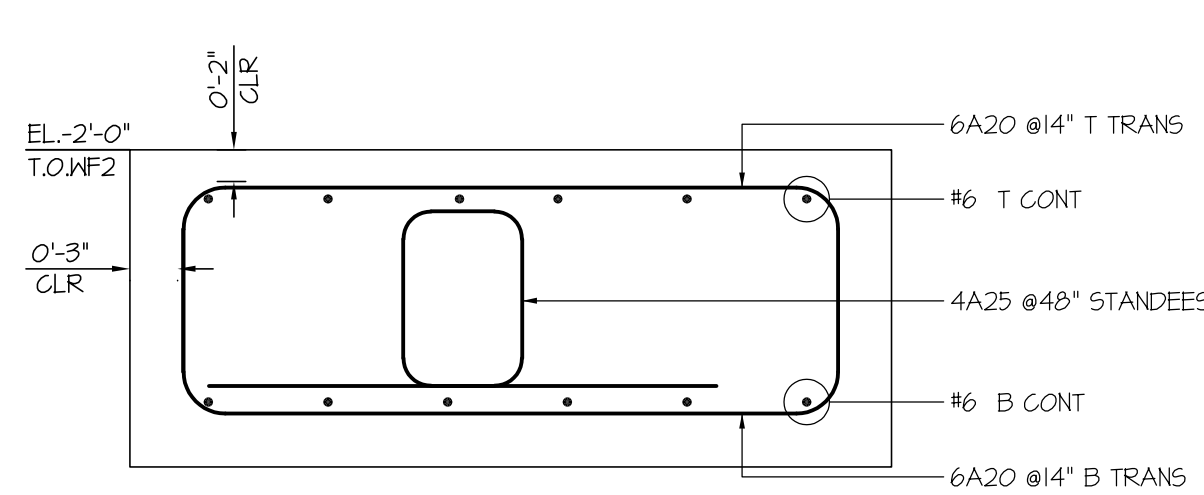
SECTION 1  
SCALE: 1" = 1'-0"  
(P1= 2'-0" X 2'-0")



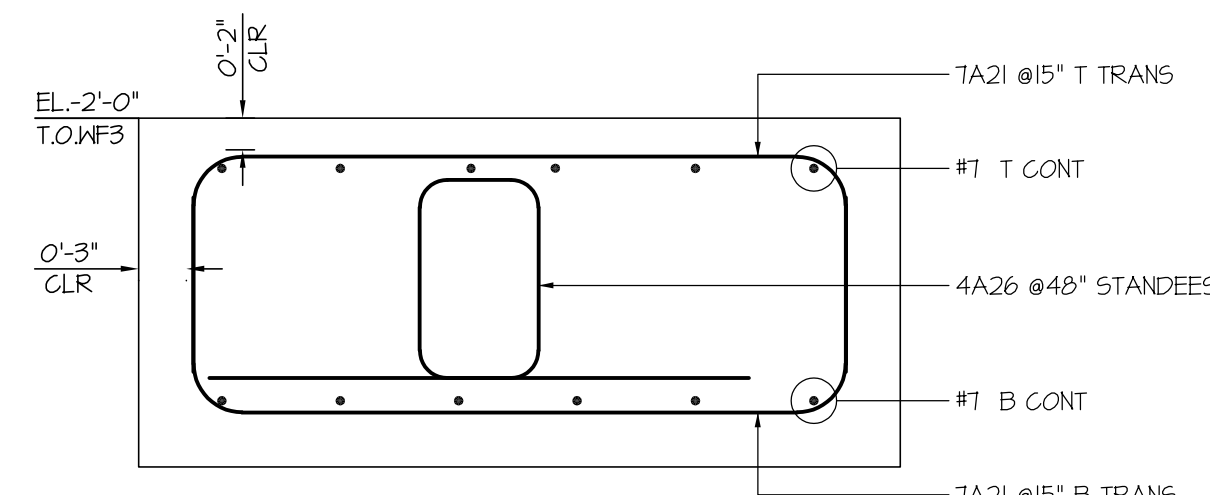
SECTION 2  
SCALE: 1" = 1'-0"  
(P2= 3'-0" X 3'-0")



SECTION 3  
SCALE: 1" = 1'-0"  
(#F1= 4'-0" X 6'-0")

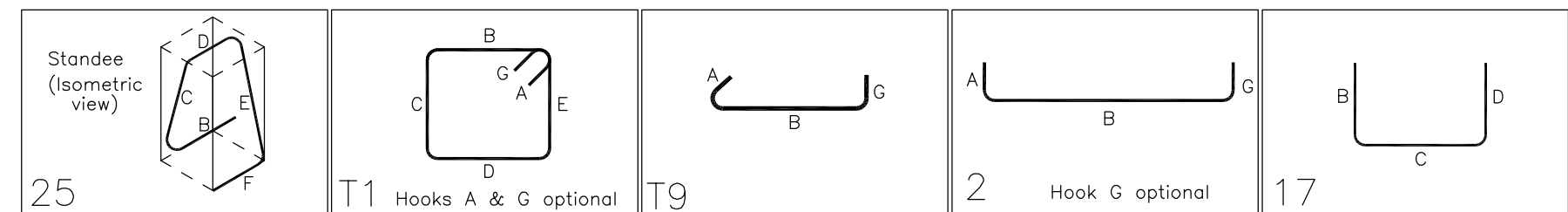


SECTION 4  
SCALE: 1" = 1'-0"  
(#F2= 4'-0" X 8'-0")



SECTION 5  
SCALE: 1" = 1'-0"  
(#F3= 4'-0" X 10'-0")

Drawing Sheet : R-1		BENDING DETAILS															
Bar Mark	Qty	Size	Total Length	Type	X'	Y'	Z'	W'	V'	U'	T'	S'	R'	Q'	P'	O'	N'
4A04	4	#4	6'-1 1/2"	25		1'-6"	1'-2 3/4"	0'-8"	1'-2 3/4"	1'-6"					1'-2 3/4"		0'-3"
4A05	3	#4	6'-10"	11	0'-4 3/4"	1'-6 3/4"	1'-6 3/4"					0'-4 3/4"					
4A11	4	#4	6'-0"	25		1'-6"	1'-2"	0'-8"	1'-2"	1'-6"					1'-1 3/4"		0'-6 3/4"
4A12	3	#4	10'-9"	11	0'-4 3/4"	2'-6"	2'-6"	2'-6"	2'-6"			0'-4 3/4"					
4A14	11	#4	7'-5"	11	0'-4 3/4"	1'-8"	1'-8"	1'-8"	1'-8"			0'-4 3/4"					
4A15	22	#4	5'-5"	11	0'-4 3/4"	0'-8"	1'-8"	0'-8"	1'-8"			0'-4 3/4"					
4A16	11	#4	11'-5"	11	0'-4 3/4"	2'-8"	2'-8"	2'-8"	2'-8"			0'-4 3/4"					
4A17	22	#4	8'-11"	11	0'-4 3/4"	1'-5"	2'-8"	1'-5"	2'-8"			0'-4 3/4"					
4A18	22	#4	3'-5"	19	0'-4 3/4"	2'-8"						0'-4 3/4"					
4A24	8	#4	6'-1"	25		1'-10"	0'-10 3/4"	0'-8"	0'-10 3/4"	1'-10"					0'-10 3/4"		0'-5"
4A25	19	#4	5'-11 3/4"	25		1'-8"	0'-11 3/4"	0'-8"	0'-11 3/4"	1'-8"					0'-11 3/4"		0'-5 3/4"
4A26	19	#4	6'-4 3/4"	25		1'-9"	1'-1 3/4"	0'-8"	1'-1 3/4"	1'-9"					1'-1"		0'-6 3/4"
5A19	53	#5	5'-2"	2	0'-10"	3'-6"						0'-10"					
6A20	122	#6	5'-6"	2	1'-0"	3'-6"						1'-0"					
6A22	12	#6	6'-0"	17		3'-0"	3'-0"										
7A06	12	#7	6'-3"	2	1'-2"	5'-1"											
7A21	114	#7	5'-10"	2	1'-2"	3'-6"									1'-2"		
7A23	12	#7	7'-0"	17		3'-6"	3'-6"										
8A01	14	#8	8'-2"	2	1'-4"	5'-6"									1'-4"		
8A13	16	#8	6'-11"	2	1'-4"	5'-7"											
9A02	7	#9	8'-8"	2	1'-7"	5'-4"									1'-7"		
9A03	7	#9	8'-4"	17		1'-5"	5'-6"	1'-5"									
9A07	10	#9	10'-8"	2	1'-7"	7'-6"									1'-7"		
9A08	10	#9	10'-4"	17		1'-5"	7'-6"	1'-5"									
10A09	9	#10	10'-8"	17		1'-7"	7'-6"	1'-7"									
10A10	9	#10	10'-4"	17		1'-5"	7'-6"	1'-5"									



STRUCTURAL NOTES	
CLEAR COVER TO REINFORCEMENT	
FOOTING	3"
FOOTING	2"
PIER	2"
LAP SCHEDULE (LAP=48 BAR DIA)	
BAR DIA	LAP
#5	2'-6"
#6	3'-0"
#7	3'-6"
#8	4'-0"
LEGENDS	
DWLS	- DOWEL
VERT	- VERTICAL
CLR	- CLEAR COVER
EL	- ELEVATION
T	- TOP
B	- BOTTOM
T.O.F	- TOP OF FOOTING
T.O.P	- TOP OF PIER
SH	- SHORT WAY
LH	- LONG WAY
WF1	- WALL FOOTING FIRST
WF2	- WALL FOOTING SECOND
TRANS	- TRANSVERSE
CONT	- CONTINUOUS
ADDL	- ADDITIONAL
COR	- CORNERS
LABEL LEGENDS	
6x2x6 #4 4C09 @12" B2	
NOTES	
SPACING	
BAR MARK	
BAR SIZE	
NUMBER OF BARS	
EACH FACE/EACH SIDE	
NUMBER OF LOCATION	
[EL. X'-XX"] DENOTES TOP ELEVATIONS	